

PUERTAS ENROLLABLES DE ALUMINIO

ALUMINIUM ROLLER DOORS

POLEAS DE NYLON



240 x 77
240 x 60
240 x 48

PLÁSTICO PARA LAMA

100 (sencilla)



PLÁSTICO PARA LAMA

100 (doble)



POLEAS DE NYLON



220 x 60
220 x 48
200 x 60
200 x 48

TOPES DE ALUMINIO



MUELLES GALVA Y NEGROS

Con gancho

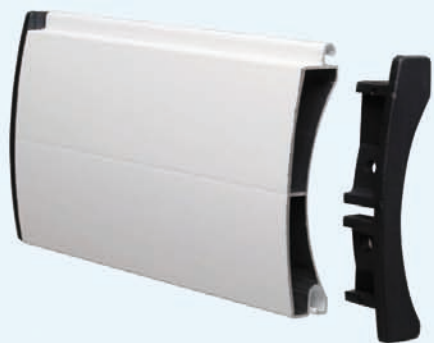
Sin gancho



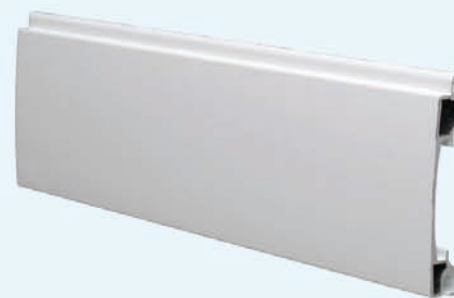
300 x 90 x 0'6
450 x 90 x 0'6
600 x 90 x 0'6

CERRADURA

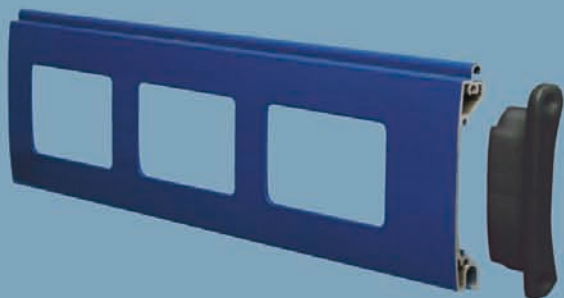




| | |
|--|---------|
| Lamas metro altura <i>Metre slats height</i> | 10 |
| Cobertura <i>Cover</i> | 100 mm. |
| Peso m ² <i>Weight m²</i> | 9 Kg. |
| Espesor <i>Thickness</i> | 1,2 mm. |



| | |
|--|-----------|
| Lamas metro altura <i>Metre slats height</i> | 13 |
| Cobertura <i>Cover</i> | 78,30 mm. |
| Peso m ² <i>Weight m²</i> | 9,70 Kg. |
| Espesor <i>Thickness</i> | 1,3 mm. |



| | |
|--|------------|
| Lamas metro altura <i>Metre slats height</i> | 10 |
| Cobertura <i>Cover</i> | 99,5 mm. |
| Peso m ² <i>Weight m²</i> | 7,50 Kg. |
| Espesor <i>Thickness</i> | 1,3 mm. |
| Troquelado <i>Die-cast</i> | 200x55 mm. |
| Microperforado <i>Microperforated</i> | 0,3 mm. |



| | |
|-------------------------------|----------|
| Cobertura <i>Cover</i> | 77 mm. |
| Peso ml. <i>Weight ml.</i> | 7,64 Kg. |
| Espesor <i>Thickness</i> | 1,2 mm. |

Goma para ajuste

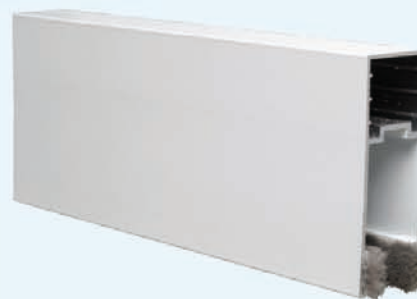
Rubber for adjustment



| | |
|-------------------------------|----------|
| Cobertura <i>Cover</i> | 105 mm. |
| Peso ml. <i>Weight ml.</i> | 1,09 Kg. |
| Espesor <i>Thickness</i> | 1,2 mm. |



| | |
|--|----------|
| Lamas metro altura <i>Metre slats height</i> | 10 |
| Cobertura <i>Cover</i> | 99,5 mm. |
| Peso m ² <i>Weight m²</i> | 8,80 Kg. |
| Espesor <i>Thickness</i> | 1,3 mm. |



Goma para ajuste

Rubber for adjustment

| | |
|-----------------------------------|---------|
| Ancho útil <i>Usable width</i> | 30 mm. |
| Profundidad <i>Depth</i> | 72 mm. |
| Espesor <i>Thickness</i> | 2 mm. |
| Peso ml. <i>Weight ml.</i> | 1,0 Kg. |